

**Inductive 2-Wire Sensors**  
More than just standard

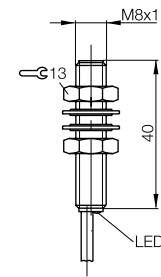
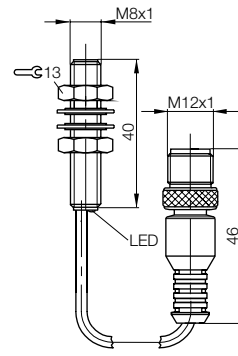
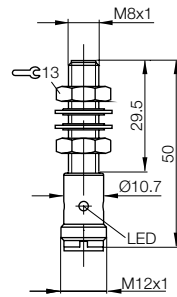


more added value

Housing size	<b>M8x1</b>
Mounting	flush
Rated operating distance $s_n$	<b>2 mm</b>
Assured operating distance $s_a$	0...1.6 mm

Housing size	<b>M8x1</b>
Mounting	flush
Rated operating distance $s_n$	<b>2 mm</b>
Assured operating distance $s_a$	0...1.6 mm

Housing size	<b>M8x1</b>
Mounting	flush
Rated operating distance $s_n$	<b>2 mm</b>
Assured operating distance $s_a$	0...1.6 mm



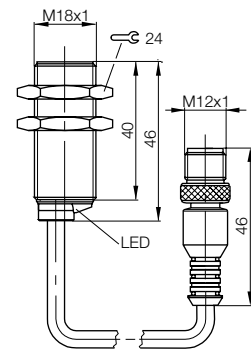
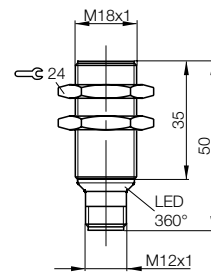
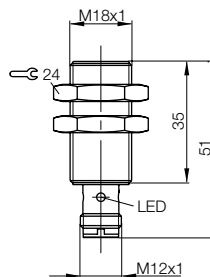
## Standard GlobalProx

NO polarized	<b>Ordering code</b>	<b>BES0022</b>	<b>BES001Z</b>	<b>BES001L</b>
	Part number	BES M08ME1-GSC20B-S04G	BES M08MG-GSC20B-BP00.3-GS04	BES M08MG-GSC20B-BV02
NO non-polarized	<b>Ordering code</b>	<b>BES001Y</b>		<b>BES001T</b>
	Part number	BES M08ME1-USC20B-S04G		BES M08MG-USC20B-BV02
NC polarized	<b>Ordering code</b>	<b>BES024N</b>	<b>BES03H8</b>	<b>BES024R</b>
	Part number	BES M08ME1-GOC20B-S04G	BES M08MG-GOC20B-BP00.3-GS04	BES M08MG-GOC20B-BV02
NC non-polarized	<b>Ordering code</b>	<b>BES024P</b>		<b>BES024T</b>
	Part number	BES M08ME1-UOC20B-S04G		BES M08MG-UOC20B-BV02

Housing size	<b>M18x1</b>
Mounting	flush
Rated operating distance $s_n$	<b>7 mm</b>
Assured operating distance $s_a$	0...5.7 mm

Housing size	<b>M18x1</b>
Mounting	flush
Rated operating distance $s_n$	<b>7 mm</b>
Assured operating distance $s_a$	0...5.7 mm

Housing size	<b>M18x1</b>
Mounting	flush
Rated operating distance $s_n$	<b>7 mm</b>
Assured operating distance $s_a$	0...5.7 mm



## Standard GlobalProx

NO polarized	<b>Ordering code</b>	<b>BES0328</b>	<b>BES0069</b>	<b>BES006C</b>
	Part number	BES M18MF-GSC70B-S04G	BES M18MF-GSC70B-S04K	BES M18MG-GSC70B-BP00.3-GS04
NO non-polarized	<b>Ordering code</b>	<b>BES02NR</b>	<b>BES006A</b>	
	Part number	BES M18MF-USC70B-S04G	BES M18MF-USC70B-S04K	
NC polarized	<b>Ordering code</b>	<b>BES02NL</b>	<b>BES02NM</b>	<b>BES039L</b>
	Part number	BES M18MF-GOC70B-S04G	BES M18MF-GOC70B-S04K	BES M18MG-GOC70B-BP00.3-GS04
NC non-polarized	<b>Ordering code</b>	<b>BES02NN</b>	<b>BES02NP</b>	
	Part number	BES M18MF-UOC70B-S04G	BES M18MF-UOC70B-S04K	

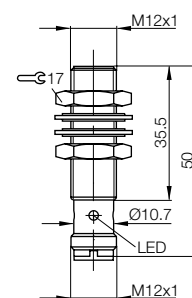
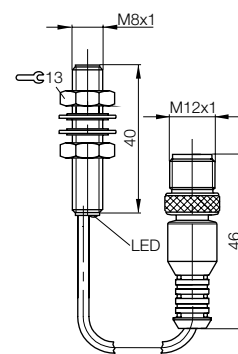
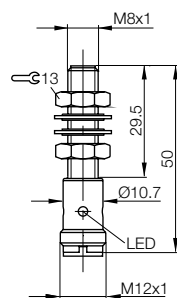
Housing size	<b>M8x1</b>
Mounting	flush
Rated operating distance $s_n$	<b>2 mm</b>
Assured operating distance $s_a$	0...1.6 mm

Housing size	<b>M8x1</b>
Mounting	flush
Rated operating distance $s_n$	<b>2 mm</b>
Assured operating distance $s_a$	0...1.6 mm

Housing size	<b>M12x1</b>
Mounting	flush
Rated operating distance $s_n$	<b>3 mm</b>
Assured operating distance $s_a$	0...2.4 mm

**more added value**

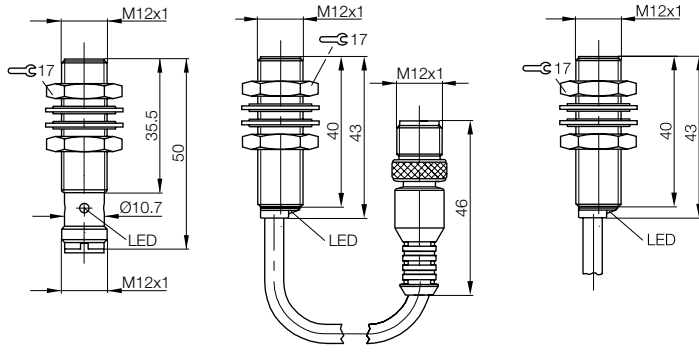
- Optimized for industrial welding plants
- Sensor housing with Teflon coating prevents weld spatter from adhering



## Resistant to weld spatter

NO polarized	<b>Ordering code</b>	<b>BES039R</b>	<b>BES039T</b>	<b>BES039U</b>
	Part number	BES M08ME1-GSC20B-S04G-U	BES M08MG-GSC20B-BX00.3-GS04-U	BES M12MF-GSC30B-S04G-U
NO non-polarized	<b>Ordering code</b>	<b>BES03H7</b>		<b>BES03HL</b>
	Part number	BES M08ME1-USC20B-S04G-U		BES M12MF-USC30B-S04G-U

<b>M12x1</b>	<b>M12x1</b>	<b>M12x1</b>
flush	flush	flush
<b>3 mm</b>	<b>3 mm</b>	<b>3 mm</b>
0...2.4 mm	0...2.4 mm	0...2.4 mm



<b>BES003Z</b> BES M12MF-GSC30B-S04G	<b>BES0042</b> BES M12MG-GSC30B-BP00.3-GS04	<b>BES0045</b> BES M12MG-GSC30B-BV02
<b>BES0041</b> BES M12MF-USC30B-S04G		<b>BES004T</b> BES M12MG-USC30B-BV02
<b>BES024J</b> BES M12MF-GOC30B-S04G	<b>BES03HK</b> BES M12MG-GOC30B-BP00.3-GS04	<b>BES024L</b> BES M12MG-GOC30B-BV02
<b>BES024K</b> BES M12MF-UOC30B-S04G		<b>BES024M</b> BES M12MG-UOC30B-BV02

# GlobalProx

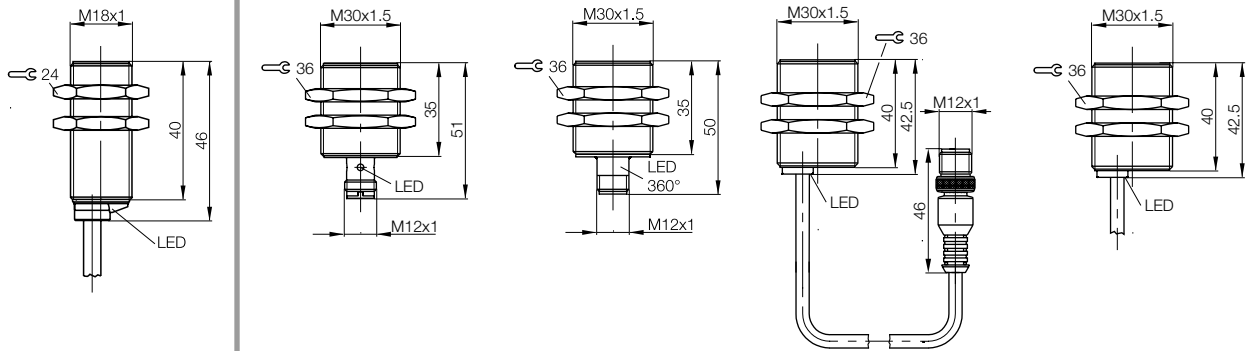
## 2-wire sensors

- Housing sizes M8 to M30
- Variations: cable, plug and cable with connector
- Flush installation, higher switching distance

**more added value**

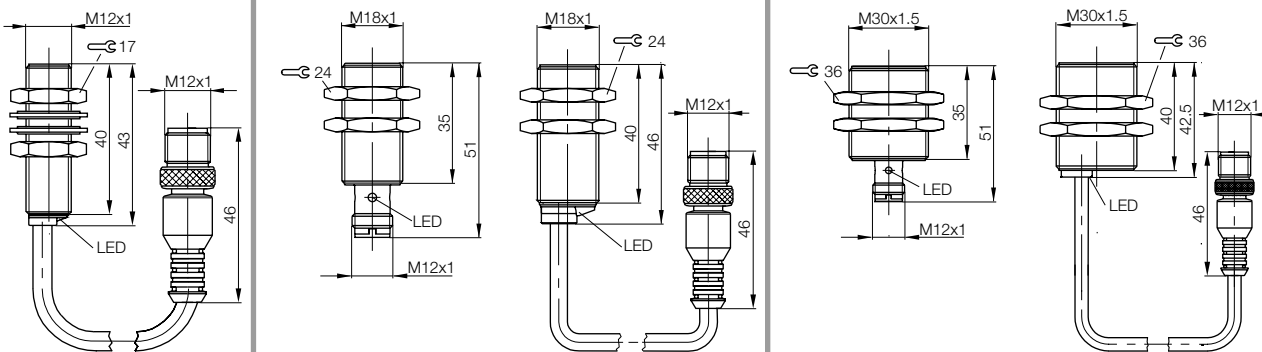
- Standardize your sensors
- Worldwide availability and application, global standard
- Ideal price/performance ratio

<b>M18x1</b>	<b>M30x1.5</b>	<b>M30x1.5</b>	<b>M30x1.5</b>	<b>M30x1.5</b>
flush	flush	flush	flush	flush
<b>7 mm</b>	<b>15 mm</b>	<b>15 mm</b>	<b>15 mm</b>	<b>15 mm</b>
0...5.7 mm	0...12.2 mm	0...12.2 mm	0...12.2 mm	0...12.2 mm



<b>BES00FA</b> BES M18MG-GSC70B-BV02	<b>BES027L</b> BES M30MF-GSC15B-S04G	<b>BES008W</b> BES M30MF-GSC15B-S04K	<b>BES008Y</b> BES M30MF-GSC15B-BP00.3-GS04	<b>BES008R</b> BES M30MF-GSC15B-BV02
<b>BES0073</b> BES M18MG-USC70B-BV02	<b>BES027E</b> BES M30MF-USC15B-S04G	<b>BES0094</b> BES M30MF-USC15B-S04K		<b>BES0091</b> BES M30MF-USC15B-BV02
<b>BES02NT</b> BES M18MG-GOC70B-BV02	<b>BES027C</b> BES M30MF-GOC15B-S04G	<b>BES027J</b> BES M30MF-GOC15B-S04K	<b>BES03H4</b> BES M30MF-GOC15B-BP00.3-GS04	<b>BES0279</b> BES M30MF-GOC15B-BV02
<b>BES02NU</b> BES M18MG-UOC70B-BV02	<b>BES027F</b> BES M30MF-UOC15B-S04G	<b>BES027H</b> BES M30MF-UOC15B-S04K		<b>BES027A</b> BES M30MF-UOC15B-BV02

<b>M12x1</b>	<b>M18x1</b>	<b>M18x1</b>	<b>M30x1.5</b>	<b>M30x1.5</b>
flush	flush	flush	flush	flush
<b>3 mm</b>	<b>7 mm</b>	<b>7 mm</b>	<b>15 mm</b>	<b>15 mm</b>
0...2.4 mm	0...5.7 mm	0...5.7 mm	0...12.2 mm	0...12.2 mm



<b>BES039W</b> BES M12MG-GSC30B-BX00.3-GS04-U	<b>BES03FH</b> BES M18MF-GSC70B-S04G-U	<b>BES03FJ</b> BES M18MG-GSC70B-BX00.3-GS04-U	<b>BES03KL</b> BES M30MF-GSC15B-S04G-U	<b>BES027K</b> BES M30MF-GSC15B-BX00.3-GS04-U
	<b>BES0398</b> BES M18MF-USC70B-S04G-U		<b>BES03FR</b> BES M30MF-USC15B-S04G-U	

Simple installation of sensors, from field level to control. Sensors and interface ideally matched



www.balluff.com

See the "Industrial Networking" catalogue for more Balluff products used for connecting to controls.

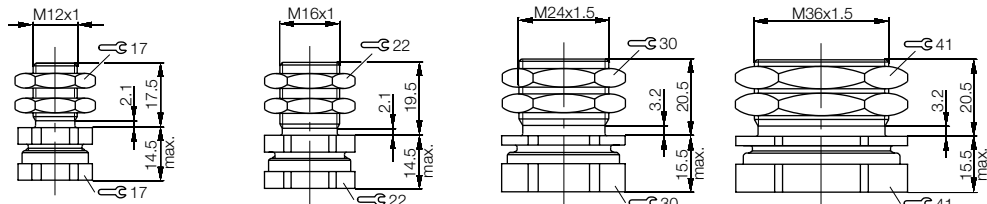
Connector	<b>BKS-S 19</b>	<b>BKS-S 20</b>
Version	Straight female	Angled female
Application	Plug sensors S4	Plug sensors S4
no LED, non-polarized, NO	<b>Ordering code</b> <b>BCC000J</b>	<b>BCC002F</b>
Part number	BKS-S 19-11-PU-05	BKS-S 20-11-PU-05
no LED, polarized/non-polarized, NC	<b>Ordering code</b> <b>BCC000K</b>	<b>BCC002H</b>
Part number	BKS-S 19-12-PU-05	BKS-S 20-12-PU-05
no LED, polarized, NO	<b>Ordering code</b> <b>BCC000L</b>	<b>BCC002J</b>
Part number	BKS-S 19-13-PU-05	BKS-S 20-13-PU-05
Supply voltage $U_B$	10...30 V DC	10...30 V DC
Cable	5 m molded PUR	5 m molded PUR
No. of wires × cross-section	2×0.34 mm <sup>2</sup>	2×0.34 mm <sup>2</sup>
Degree of protection per IEC 60529	IP 67	IP 67
Ambient temperature range $T_a$	-25...+70 °C	-25...+70 °C



### Clamp for standard applications with fixed stop (CuZn-coated)

for sensor	M8x1	M12x1	M18x1	M30x1.5
<b>Ordering code</b>	<b>BAM00AH</b>	<b>BAM00E0</b>	<b>BAM00FT</b>	<b>BAM00J6</b>
Part number	BES 08.0-KH-2S	BES 12.0-KH-2S	BES 18.0-KH-2S	BES 30.0-KH-2S

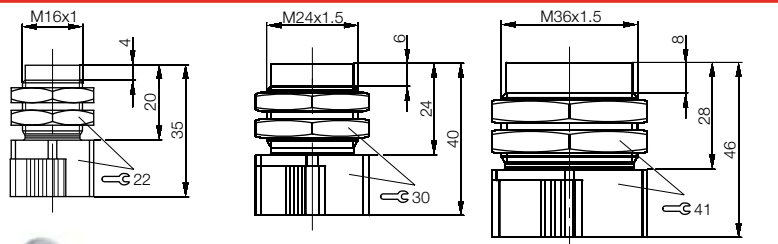
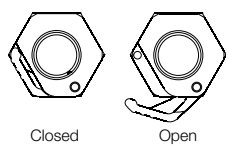
When using BES ...-2S clamps, a small reduction in the switching distance can be expected. Always verify the usability of the clamps in the application.



### Quick-locking clamps for welding applications with fixed stop (CuZn teflon coating)

for sensor	M12x1	M28x1	M30x1.5
<b>Ordering code</b>	<b>BAM00EH</b>	<b>BAM00H6</b>	<b>BAM00JJ</b>
Part number	BES 12.0-KH-9ST/W	BES 18.0-KH-9ST/W	BES 30.0-KH-9ST/W

Teflon-coated quick-locking clamps are optimized for sensors resistant to weld spatter, without reducing the switching distance.



Balluff GmbH  
Schurwaldstrasse 9  
73765 Neuhausen a.d.F.  
Germany  
Phone +49 7158 173-0  
Fax +49 7158 5010  
balluff@balluff.de  
www.balluff.com